

**CERTIFIED LAND CORNER RECORDATION**

DESCRIPTION OF CORNER EVIDENCE FOUND, AND ORIGINAL RECORD (If known)

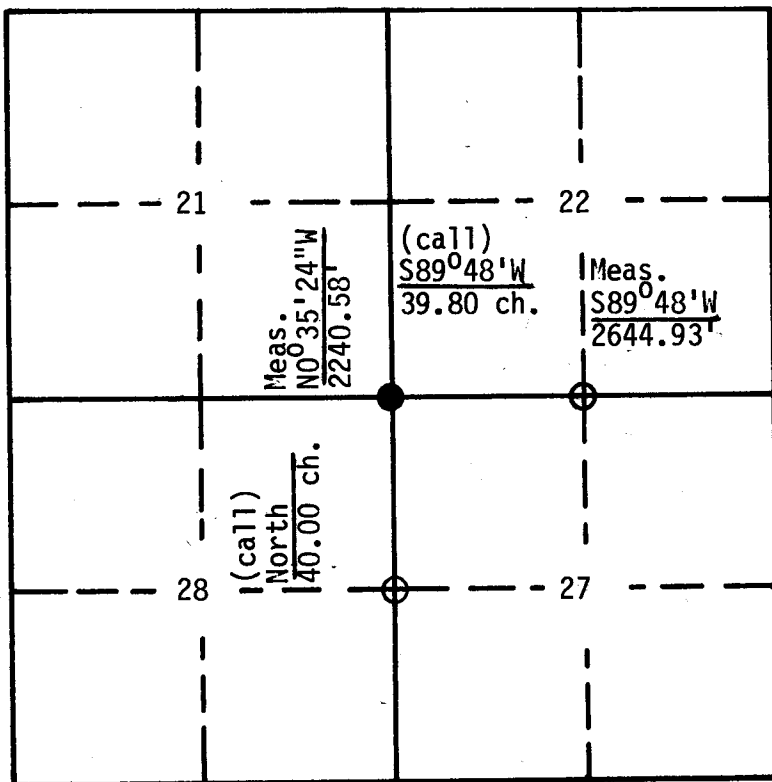
Record: Set a granite 16x10x6 for corner to sections 21, 22, 27 and 28.

DESCRIPTION OF MONUMENT AND ACCESSORIES ESTABLISHED  
TO PERPETUATE THE ORIGINAL LOCATION OF THIS CORNER:

Found: set granite stone 9"x6", 4" above ground marked with 1 notch on the Southwest face and 3 notches on the Southeast face. A fence corner post is located N53°E - 5.5'

Set: Nothing

SKETCH, WITH COURSE AND DISTANCE TO ADJACENT CORNER IF DETERMINED IN THIS SURVEY.  
(May Sketch or Paste Reproduction on Reverse Side.)



Section 27 T: 17N R: 66W

- corner filed--this form
- controlling corner

DETAILS

Basis of bearings were established from the record bearing between the Northwest and North ¼ section corner of Section 27, T17N R66W.

Surveyed: October 24, 1983

Job # 83104.000

I, Randall J. Rowley certify that I have carefully performed or reviewed the work done on the diagrammed corner as reported on this recordation form and approve the same.

Randall J. Rowley 3888  
Signature of Surveyor Registration No.

Green River  
STATE OF WYOMING,  
Office of Clerk and Recorder,  
County of Laramie

725447

This "corner record" was filed for record on the DEC 9 day of 1983, 1983, was noted on the cross-index plat and is assigned page No. \_\_\_\_\_, in book No. \_\_\_\_\_.

James C. Whitehead  
County Official

Cross Index No. _____	T. _____	R. _____	Mer. _____
_____	T. _____	R. _____	Mer. _____
_____	T. _____	R. _____	Mer. _____
_____	T. _____	R. _____	Mer. _____
_____	T. _____	R. _____	Mer. _____
_____	T. _____	R. _____	Mer. _____
_____	T. _____	R. _____	Mer. _____

R-13